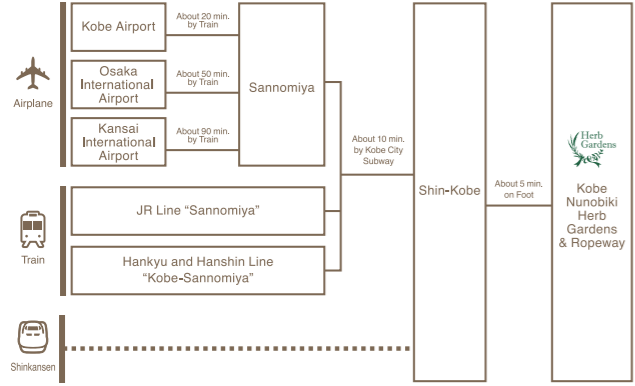


Access



Access to "Kobe Nunobiki Herb Gardens" is only by ropeway from "Herb Gardens Bottom Station", also there is not a parking lot in our facilities. Please use nearby parking lot.

**Herb Gardens Kobe Nunobiki Herb Gardens & Ropeway**

1-4-3 Kitanocho, Chuo-ku, Kobe City, Hyogo Prefecture 650-0002 Japan  
TEL : +81 78-271-1160

Hours of Operation

		Ropeway			Herb Gardens	
		Open	Up Line Closed	Down Line Closed	Open	Closed
Spring 3/20-7/19	Weekday	9:30	16:45	17:15	10:00	17:00
	Weekend and holiday		20:15	21:00		20:30 <sup>*1</sup>
Autumn 9/1-11/30	Every day		16:45	17:15		17:00
Summer 7/20-8/31	Every day					
Winter 12/1-3/19	Every day					

- \*1 During night-time opening (after 5p.m.), only the top observatory area is open.
- Open all year round without 2weeks maintenance works in the winter.
- It might be closed due to bad weather such as the strong wind and/or thunder.

Fares

		Round ticket	One-way ticket	Remarks
Daytime (9:30~17:00)	Adult	1,800yen	1,130yen	Elementary + Junior High School Student
	Youth	900yen	570yen	
	Preschool Child	free		
Evening (17:00~21:00)	Adult	1,100yen	-	Round ticket for evening useonly
	Youth	700yen		
Bottom Station >>> Mid Station (Interval ticket)		Adult 930yen	Youth 470yen	Not enter the Herb Gardens



www.kobeherb.com

**Kobe Nunobiki Herb Gardens**  
神戸布引ハーブ園/ロープウェイ

## Welcome to Kobe Nunobiki Herb Gardens

Spring, when the cherry blossoms and magnolias color the mountainsides.

Summer, when the night views astound.

Autumn, when the leaves turn the world crimson.

Winter, when the streetscape unfolds under perfectly clear skies.

Looking from the window of the ropeway, you feel like you've been transported into the eye of the four seasons. After taking in the beauty of the scenery below, you're greeted by the beautiful Herb Gardens.

With its colors, aromas and energy, this is truly a heavenly spot.



### Must-sees from the ropeway

With its large windows, passengers on the ropeway get an incredible panoramic view of Kobe City as well as some well-known spots like the Nunobiki no Taki Falls and Gohonmatsu Entei (Nunobiki Gohonmatsu Dam), which has been designated as an Important Cultural Property.



Reminiscent of elegant midair stroll,  
10 minutes and 1,460m to the top (400m)

Comfortable space and panoramic views

Enjoy the beautiful scenery and night view of Kobe  
with a leisurely ride from the base to the top of the mountain.

Barrier free for everyone

With no steps and easy boarding and exiting, the ropeway is barrier free.

## Four Seasons Garden

### 12 spacious gardens for year-round beauty

This is one of Japan's largest herb gardens, boasting around 75,000 herbs and flowers of 200 different species.

The 12 gardens are arranged according to different themes so that visitors can enjoy the different herbs and flowers as they bloom in each season.

The path, flowerbeds and hill give you a great sense of the seasons so you can truly appreciate the plethora of colors and aromas.



## View Area



View Plaza



Rose Symphony Garden



The Store at the Top of the Mountain

## Glasshouse Area



Herbal House



Glasshouse/ "The Statue of Love"



The Veranda at Kobe



## Kaze no Oka Area



Kaze no Oka Flower Garden



Recreation Area



Lily Garden

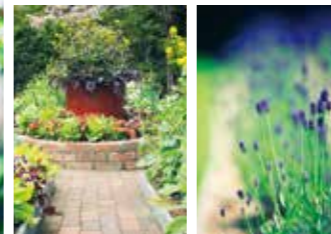
## Garden Area



Four Seasons Garden



Herb Museum



Kitchen Garden "Potager" Lavender Garden

Four Seasons Garden **Spring**

Beautiful, lively spring

Spring is when the Herb Gardens are at their best. The herbs and flowers take center stage, blooming in truly gorgeous color.

It takes just a single flower to signal the advent of spring and soon you'll be greeted by canola flowers, chamomile flowers and their fragrance of sweet apples, and around 60 kinds of rose.

Here you can savor the green, green forest teeming with life, as well as all the scents and colors of spring in the gardens.



Flowers of The Season



Field mustard March to April



German chamomile May to June



Rose May to June

### Unforgettable summer

Escape the hustle and bustle of the city in summer when the sun streams down.  
The cool breeze blowing through the gardens is welcome relief from the heat of the day.  
Beauty is all around, from lavender, known as the queen of the herbs, to the sunflowers, ever cheerful as they stretch up toward the sky.  
Summer is the perfect time for adults and children alike to hang out and relax for the day.  
Play in the day and enjoy the dazzling night view once the sun goes down. These are memories you'll not soon forget.



### Flowers of The Season



Lavender May to July



Lilies June to July



Sunflower July to August

Four Seasons Garden **Autumn**

Relaxed and casual autumn strolls

When the skies clear and the cool breeze begins to blow, you know it's the long-awaited start of autumn. The sun shines through the trees, soothing mind and body. The mountains slowly turn red with dainty cosmos flowers and beautifully fragrant roses. Get a taste for the relaxed ambience of autumn.



Flowers of The Season



Sage September to December



Rose October to November



Cosmos October to December

Four Seasons Garden **Winter**

Warm winter walkway

The coming of winter is met with a cold wind and rosy cheeks. It's time to head to the glasshouse.  
The warmth hits you as you enter. The Bougainvillea, Streptocarpus and other brightly colored exotic flowers greet you.  
The luxurious café so come in, relax and enjoy a warm herb tea and delicious sweets. It's a perfect place to feel the adoration at the "Statue of Love," so if you want a little bit of happiness, come with someone you cherish. You'll be sure to find the ideal winter way to be content.



Flowers of The Season



Hibiscus December to March



Sutorerichia December to March



Bougainvillea January to March



## View Plaza

---

As you get off the ropeway, you are immediately come upon the Welcome Garden full of flowers in every season.

The old Wartburg Castle in Germany has been used as the image for the rest house while a dedicated spot for relaxing is surrounded by the castle gate, inviting you into a space inspired by Europe in the Middle Ages.

The rest house includes a restaurant where you can enjoy a pleasurable lunch using freshly picked herbs and a shop with original Herb Gardens goods.

The outdoor market is open in spring and summer for you to try the original herb cuisine.



## Fragrance Museum

---

The Fragrance Museum displays a host of items associated with fragrance such as antique perfume bottles and devices that extract aroma.

Here you can get an insight into the historical aspects of fragrance by getting up close and personal with the beautifully adorned perfume bottles.

In the natural essential oils section, there are roughly 80 different types of oil so you can experience the real depth of aroma.

At the aroma studio, you can make your own aroma goods like soap using essential oil and room spray.

Find a fragrance you like and stay until your heart's content.







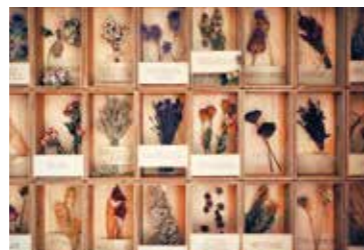
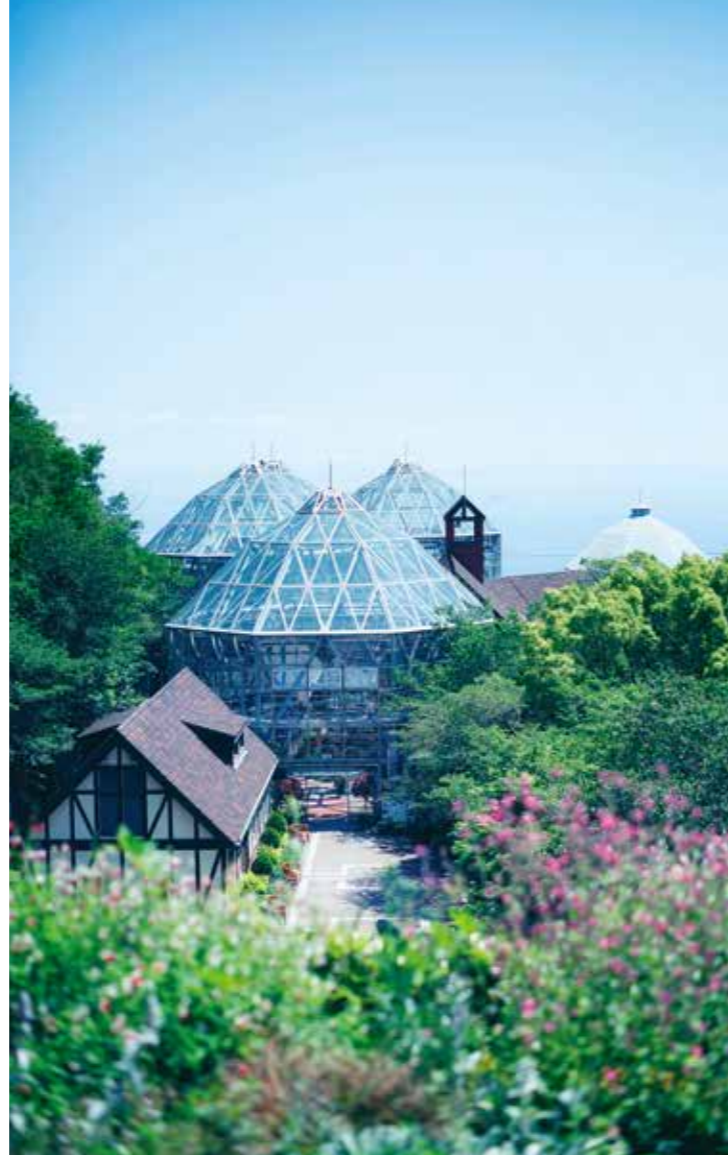
The “Statue of Love” was donated by Terni City in Italy, the birthplace of Saint Valentine. It shows the tender love of a mother holding her child. The spot is known for soothing the heart and expressing love.

## Glasshouse

The beautiful glasshouse, which sits behind a gate that serves as homage to human encounters, displays art using herbs that can enhance your life with the themes of clothing, food and living.

Learn about the aroma and efficacy of herbs so you also can use herbs to help soothe your body and mind and live in a more peaceful state.

The glasshouse has a truly exotic feel with different vivid tropical flowers and plants in bloom all year round.



Herb Guided Tour



Seasonal Herb Craft



Herbal Footbath



Treasure Hunt Game



## Activity

### Discover the fun of herbs

Head to the Rose Symphony Garden and truly make the most of your time in the Herb Gardens. Enjoy a relaxing cup of tea surrounded by roughly 60 types of the fragrant English Rose.

Take part in a guided tour of the herbs if you feel like a walk. Staff will introduce the different ways of using the herbs as well as their attractive features and how much fun they can be.

Take a break from the walk with a relaxing herbal footbath using seasonal herbs picked fresh in the garden.

Enjoy the world of herbs in a personal way.

Different events are held during the Golden Week and summer holiday periods that are fun for both children and adults.



## Location

### Savor the view

The Herb Gardens offer an amazing view of Kobe. THE VERANDA in glasshouse is the perfect place to experience Kobe while surrounded by greenery and flowers and with a gentle breeze. A lawn area on the hill offers a stunning view of the Kobe cityscape and the sea beyond. Sitting in nature staring at the sea is a recipe for some wonderful memories. The sea and sky are painted a deep blue color as evening turns to night - truly a sight to behold. Check out the beautiful illumination on the Observation Tower at night when the fantastical "forest of illuminations" comes to life.



Nightscape from Ropeway



THE VERANDA Terrace



Magical Space "Forest of Illuminations"



Recreation Area



Nightscape from View Plaza



## Moment of Bliss

### Have a precious time

A morning, there is pure mist and a quiet time in the garden. We boast fragrant herbs and blooming flowers. Early in the afternoon, it is fascinating for great space in front of the old castle. You can talk over a glass of wine, and take a walk along a path with sunshine filtering through the leaves.

The beautiful sunset fascinate you in the garden.

We offer you the beautiful scenery and illumination at night.

This garden bring you special a time. Please feel the special moment with your eyes, ears, hearts and minds.





Main Dining

## The Herb Dining

Open: 11:00 - 15:00 (L.O. 14:00)

At The Herb Dining mountaintop restaurant where you can experience a world of color, aroma and flavor you can choose the dish you want from the main courses of pasta, meat and fish.

8 kinds of selected antipasto beautifully arranged on tiered tray will be served directly to your table. The colorful cuisine embodies the Herb Gardens and will make your time super blissful.



Exciting, blissful times

❁ Garden Plate Collection ❁





## THE VERANDA

2F Cafelounge Open : 10:30 - 16:30 (L.O. 16:00)

1F Terrace Open : 10:30 - 16:30

The spot is classic and luxurious, fusing an image of western housing from Kobe in days gone by with modern café style where guests can look down to the glittering sea, lush green and the streets of the port city of Kobe.



The spirit of elegance





Herb Tea



Herbal Cookie



Essential Oil

KOBE  
HERB  
GARDENS  
Original

Liven your life with aromas

Kobe Nunobiki Herb Gardens' original brand is based on the idea of livening people's lives through aromas. Staff dedicated to providing "only the best," a promise we can keep in the Herb Gardens, plan and develop each of the products on offer. Our mission is to make your everyday beautiful and healthy through the power of herbs that soothe the body and mind with their color fragrance and flavor.

[www.kobeherb-original.com](http://www.kobeherb-original.com)



Aroma Clear Hand Gel/Aroma Clear Spray/Outdoor Body Mist



Body Cream / Hand Cream / Lip Balm



Room Spray